

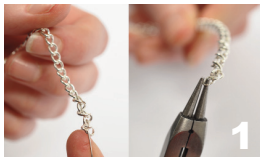
## Charming Chain Corsage

### Materials

- 100g x high quality glass mix green (GLXH16)
- 5 x ceramic 16mm glazed round shocking pink (CEAB12)
- 2 x packet of 20 3mm round spacer bead silver plated (MTEA0331)
- 1 x 10x5mm flower connector silver coloured (LNKA)
- 1 metre x trace chain silver plated (CHTRSP)
- 1 metre x heavy chain silver plated (CHHSP)
- 1 x memory wire bracelet (MWS31)
- 1 x memory wire choker (MW130-1)
- 1 x 0.4mm wire silver plated (SPW04)
- 1 metre x 2.5mm suede pastel pink (SD2.512)
- 1 packet 25 x 5mm jump rings silver plated (JR5SP)
- 2 x flat leather crimp silver plated (LFSP)
- 3 x packet of 12 headpin silver plated (HPSP)

You will also need 1 pair multi pliers (CRMT)

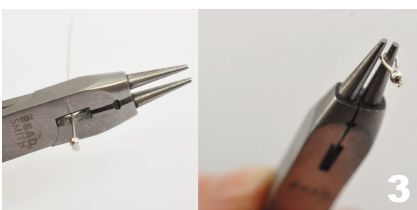
**1.** Cut a 60cm length of heavy chain. Start with the first link of the chain and weave the memory wire in and out of each link. Use the round nosed part of your multi pliers and bend the memory wire into a loop and catch the first link of the chain in the loop, you need to be firm with the memory wire. Repeat for the other end.



**2.** 20cm from the end of the loop start your wire wrapping. Cut 25cm of 0.4mm silver plated wire. (cut more if needed). Wind one end into the links of the chain weave through until secure. Thread a bead onto the wire, weave the wire through the chain link and pull tight. Add beads in this way until the beaded section is 10cm long. Make another cluster close to the end large enough for one pink ceramic bead.



**3.** Onto a headpin thread a 3mm silver spacer bead. Using the cutting part of your multi pliers trim the headpin 1cm above the bead. Use the round nosed part of the pliers bend into a loop and close. Make 6 more.



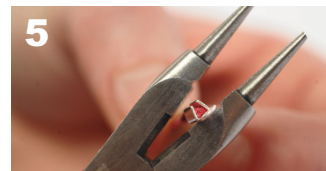
As the green glass beads are a mixed packet, your necklace will not be exactly the same as pictured, so play around to make your own clusters.



**4.** Cut 10cm of 0.4mm wire. Thread through the pink ceramic bead, through the seven beaded headpins back through the centre of the bead and pull tight. Attach to the centre of the small cluster of green beads by winding the ends of the wire through the chain until securely attached. Make three more and add them in the same way to the large cluster.



**5.** Cut two 22cm lengths of trace chain and cut a 22cm length of pink suede. Attach a flat leather crimp to either end of the suede. Use the flat part of the multi pliers and squeeze the crimp flat one side at a time.



**6.** Using the round nosed part of the multi pliers open a 5mm jump ring, add the chain, the suede and the flower connector, close the jump ring. Open another jump ring, attach the flower connector and join to the plain end of your necklace. Open another jump ring thread on the loose ends of chain and suede and attach to the other end of your necklace. Close the jump ring.



### To make the bracelet.

Cut 30cm of heavy chain, then follow step 1. Follow step 2 to create a cluster of green beads in the centre of your bracelet and add a single central pink bead by following steps 3 and 4.